

CytoGlow™

**Shc (Ab-349)
Colorimetric Cell-Based ELISA Kit**

**Catalog #: CB5628
Reactivity: Human, Mouse, Rat**

**Storage: 4°C
Expiration: 6 months from receipt**

**For Research Purposes Only. Not
Intended for Diagnostic or Clinical
Procedures.**

Manual Version: 45.7.1527

CONTENTS

| | |
|---|----------|
| Introduction..... | 3 |
| <i>Colorimetric Cell-Based ELISAs</i> | |
| <i>Shc (Ab-349) Cell-Based Specificity</i> | |
| Assay Format..... | 4 |
| Materials Included/ Storage and Stability..... | 5 |
| Additional Materials Required..... | 5 |
| <i>Antibody Specificity.....</i> | <i>6</i> |
| <i>Anti- Shc (Ab-349) Antibody WB</i> | |
| <i>Anti-GAPDH Antibody WB</i> | |
| Reagent Preparation..... | 7 |
| Assay Protocol..... | 8 |
| Data Analysis..... | 10 |
| Short Protocol..... | 11 |
| Health and Safety Precautions/Assay Restrictions..... | 12 |
| Troubleshooting Guide..... | 13 |
| ELISA Plate Template..... | 14 |
| Technical Support..... | 15 |

ASSAY PRINCIPLES

Shc (Ab-349) Colorimetric Cell-Based ELISA

The Colorimetric Cell-Based ELISA Kit allows for the detection of various target proteins and the effects that certain stimulation conditions have on target protein expression in different cell lines. Qualitative determination of target protein concentration is achieved by an indirect ELISA format. In essence, the target protein is captured by target-specific primary (1°) antibodies while the HRP-conjugated secondary (2°) antibodies bind the Fc region of the 1° antibody. Through this binding, the HRP enzyme conjugated to the 2° antibody can catalyze a colorimetric reaction upon substrate addition.

Upon sufficient color development, the reaction can be terminated through addition of Stop Solution (2 N Sulfuric Acid) where the color of the solution will turn yellow. The absorbance of each well can then be read by a spectrophotometer, allowing for generation of a standard curve and subsequent determination of protein concentration.

The Shc (Ab-349) Cell-Based ELISA Kit is a convenient, lysate-free, high throughput and sensitive assay kit that can monitor target protein Shc (Ab-349) and expression profile in cells. The kit can be used for measuring the relative amounts of Shc (Ab-349) proteins in cultured cells as well as screening for the effects that various treatments, inhibitors (ie. siRNA or chemicals), or activators have on Shc (Ab-349).

ASSAY FORMAT


**α-Target
Primary Antibody**



Cells are seeded onto the bottom of each well. The cells are quenched, fixed and the well is blocked.


**α-Primary IgG
Secondary Antibody**



Primary antibodies specific for the target antigen are added and allowed to bind to their respective epitopes.


HRP Conjugate



HRP-conjugated secondary antibodies specific for the primary antibody are added and allowed to bind to their respective epitopes.


Unreacted TMB




**Blue TMB
Diimine Product**

TMB substrate is converted to the blue TMB diimine via the HRP enzyme. Upon addition of acid, the reaction terminates and the wells can be read at 450 nm.

MATERIALS INCLUDED

| Reagent | Quantity | Storage/Stability after first use |
|--|--------------|-----------------------------------|
| 96-Well Cell Culture Clear-Bottom Microplate | 1 Plate | - |
| 10x TBS | 24 ml (10x) | 1 month at 4°C |
| Quenching Buffer | 24 ml (1x) | |
| Blocking Buffer | 50 ml (1x) | |
| 15x Wash Buffer | 50 ml (15x) | |
| 100x Anti- Shc (Ab-349) Antibody | 60 µl (100x) | |
| 100x Anti-GAPDH Antibody | 60 µl (100x) | |
| HRP-Conjugated Anti-Rabbit IgG Antibody | 6 ml (1x) | |
| HRP-Conjugated Anti-Mouse IgG Antibody | 6 ml (1x) | |
| Primary Antibody Diluent | 12 ml (1x) | |
| Ready to Use Substrate | 12 ml (1x) | |
| Stop Solution | 12 ml (1x) | |
| Crystal Violet Solution | 6 ml (1x) | |
| SDS Solution | 24 ml (1x) | |
| Adhesive Plate Seals | 2 Seals | |

ADDITIONAL MATERIALS REQUIRED

The following materials and equipment are NOT provided in this kit but are necessary to successfully conduct the experiment:

- Microplate reader able to measure absorbance at 450 nm and/or 595 nm for Crystal Violet Cell Staining (Optional)
- Micropipettes with capability of measuring volumes ranging from 1 µl to 1 ml
- **37% paraformaldehyde stock concentration or 8% paraformaldehyde from other sources**
- Deionized or sterile water
- Squirt bottle, multichannel pipette and/or automated microplate washer
- Computer software capable of generating or displaying logarithmic functions
- Absorbent papers or vacuum aspirator
- Test tubes or microfuge tubes capable of storing ≥1 ml
- Orbital shaker, Incubator, and Stimulants
- **Poly-L-Lysine or Poly-D-Lysine for suspension or loosely attaching cells**

ANTIBODY SPECIFICITY

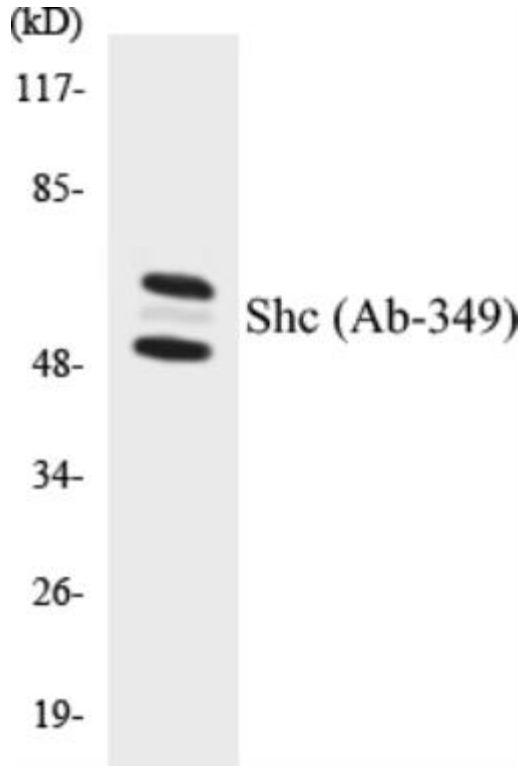


Figure 1. *Anti-Shc (Ab-349)*

Western blot analysis of extracts from HeLa cells, treated with Calyculin A 50nM 15', using Shc (Ab-349) Antibody.



Figure 3. *Anti-GAPDH Antibody WB*

Western blot analysis of tissue lysates from human (1), mouse (2) and rat (3).

REAGENT PREPARATION

Ensure that all supplied solutions are at ambient temperature before use. It is recommended to conduct assays for all controls and samples in duplicate. Sufficient reagents are provided to assay 96 wells; therefore, on the day of the experiment, prepare only the required amount. During incubation steps, use an orbital shaker set at 200 rpm to ensure proper equilibration of solutions in the cell culture plate wells. **All other provided solutions are ready to use.**

1. Dilute the 10x TBS to 1x TBS by combining 9 volumes of ddH₂O and 1 volume of 10x TBS.
2. Dilute the 15x Wash Buffer to 1x Wash Buffer using 14 volumes of ddH₂O and 1 volume of 15x Wash Buffer.
3. Prepare the Fixing solution to 4% paraformaldehyde (for adherent cell lines) or 8% paraformaldehyde (for suspension or loosely attaching cell lines). Dilute 37% paraformaldehyde with 1x PBS to desired paraformaldehyde percentage.
4. For suspension or loosely attached cells: Prepare Poly-L-Lysine to working concentration as stated in manual. (Not included, recommended Sigma Cat# P4832).

If the cell line is known to digest Poly-L-Lysine, Poly-D-Lysine may be an alternative for this step. Follow the manufacturer's instructions if using a different Poly-L-Lysine or Poly-D-Lysine.

5. Prepare a 1x dilution of both 100x primary antibodies anti-Shc (Ab-349) and Anti-GAPDH by using the Primary Antibody Diluent at a ratio of 1:100.

ASSAY PROTOCOL

1. Seed 100 μ l of 20,000 adherent cells into each well in a 96-well plate.
Note: Optimal seeding concentrations should be determined by investigator and experimental goals.

For suspension cells and loosely attached cells:

- a. Coat plates evenly with 20 μ l of Poly-L-Lysine (Sigma Cat# P4832)
 - b. After 5 minutes, remove solution by aspiration and rinse once with tissue culture grade water.
 - c. Allow 2 hours to dry prior to seeding cells.
2. Incubate cells overnight or at least 6 hours at 37°C, 5% CO₂.
 3. Treat the cells as desired.
 4. Remove the cell culture medium *gently* and fix cells with 100 μ l of 8% Paraformaldehyde per well. Incubate for 20 minutes at room temperature (RT).
Note: 8% Paraformaldehyde solution is volatile. Wear appropriate personal protection equipment (mask, gloves and glasses) when using this chemical.
 5. Aspirate the solution and add 300 μ l of 1x Wash Buffer into each well being used and gently shake for 2-3 mins on an orbital shaker. Repeat this process 3 times. After the last wash ensure no liquid remains by inverting the plate and tapping it against clean paper towels.
Note: The plate can be stored at 4°C for a week after this step.
 6. Add 100 μ l Quenching Buffer to each well and incubate for 20 mins at RT.
 7. Repeat step 5.
 8. Add 200 μ l of Blocking Buffer and incubate for 1 hour at RT.
 9. Add 50 μ l of 1x Primary Antibody solutions into each well and incubate overnight at 4°C. If target concentration is known to be high, incubate for 2 hours at RT. Designate 2 wells for negative control by omitting the 1x Primary Antibodies.
 10. Repeat step 5.
 11. Add 50 μ l of HRP-Conjugated Anti-Rabbit IgG Antibody into the wells incubated with 1x Anti-Shc (Ab-349) Antibody.
 12. Add 50 μ l of HRP-Conjugated Anti-Mouse IgG Antibody into the wells incubated with 1x Anti-GAPDH Antibody.

13. Incubate the plate for 1.5 hours at RT.
14. Repeat step 5.
15. Add 50 μ l of Ready to use Substrate into each well, cover plate from light, and incubate for 15-20 mins at RT.
16. Add 100 μ l of Stop Solution into each well and read at 450 nm.
17. Repeat step 5 and allow plate to air dry for 5 mins at RT.
18. Add 50 μ l of Crystal Violet Solution into each well and incubate for 30 mins at RT.

Note: Crystal Violet is an intense stain. Avoid contact with skin and clothing.

19. Dip the plate into a bucket of water in the sink while keeping the water running, and carefully rinse the wells with ddH₂O until no more color is visible. Let the plate to dry for 30 mins.
20. Add 100 μ l of SDS Solution into each well and incubate for 1 hour at RT.
21. Read absorbance at 595 nm with microplate reader. If absorbance is too high, the solubilized Crystal Violet Solution may be diluted tenfold with ddH₂O on a separate 96-well plate.

DATA ANALYSIS

Background subtraction

Average the duplicate or triplicate absorbance readings for each control and sample, subtracting them from the averaged absorbance for wells where primary antibodies have been omitted.

Anti-GAPDH Internal positive control

The OD450 values obtained ensure the assay is functioning, and cell densities between wells should be proportionate to seeding concentration. Stimulation of cells should impact target primary antibody absorbance values, with no effect on the anti-GAPDH absorbance.

Crystal Violet Staining Normalization

The Crystal Violet staining method enables intensity normalization within the same well. By using the ratio, the OD450 readings obtained can be normalized with the OD595 values. This constitutes a within-well method of analysis.

If the absorbance was too high and a tenfold dilution was required. Multiply all values by 10 prior to normalization.

OD450 anti-Shc (Ab-349)/OD595 Crystal Violet.

By doing so, the expression levels of Shc (Ab-349) are adjusted to account for the cell density present in each well.

Stimulated to Non-Stimulated Comparison

After normalization Crystal Violet staining, the resultant proportional values can be used to analyze the effects of stimulants in this assay.

SHORT PROTOCOL

Seed cells into wells and incubate overnight at 37°C, 5% CO₂



Apply desired treatment conditions



Add 100ul of Fixing Solution and incubate 20 minutes at room temperature



Add 100ul of Quenching Buffer and incubate 20 minutes at room temperature



Add 200ul of Blocking Buffer and incubate for 1 hour at room temperature



Add 50ul of 1x Primary Antibodies and incubate overnight at 4°C



Add 50ul of HRP-Conjugated Secondary Antibodies and incubate for 1.5 hours at room temperature



Add 50ul of Ready-to Use Substrate and incubate for 30 minutes at room temperature



Add 50ul of Stop Solution and read OD at 450nm



HEALTH AND SAFETY PRECAUTIONS

- Reagents provided in this kit may be harmful if ingested, inhaled or absorbed through the skin.
- Fixing Solution contains formaldehyde. Formaldehyde is known to be a highly toxic reagent. Personal protection is strongly recommended while working with this chemical.
- Stop Solution contains 2 N Sulfuric Acid (H_2SO_4) and is an extremely corrosive agent. Please wear proper eye, hand and face protection when handling this material. When the experiment is finished, be sure to rinse the plate with copious amounts of running water to dilute the Stop Solution prior to disposing the plate or strips.
- Crystal Violet is an intense stain reagent. Avoid contact stain and clothing.

ASSAY RESTRICTIONS

- This ELISA kit is intended for research purposes only, NOT diagnostic or clinical procedures of any kind.
- Materials included in this kit should NOT be used past the expiration date on the kit label.
- Reagents or substrates included in this kit should NOT be mixed or substituted with reagents or substrates from any other kits.
- Variations in pipetting technique, washing technique, operator laboratory technique, kit age, incubation time or temperature may cause differences in binding affinity of the materials provided.
- The assay is designed to eliminate interference and background by other cellular macromolecules or factors present within any biological samples. However, the possibility of background noise cannot be fully excluded until all factors have been tested using the assay kit.
- Individual results may vary due to differences in technique, plasticware and water sources.

TROUBLESHOOTING GUIDE

| Problem | Cause | Solution |
|------------------------|--------------------------------|---|
| Low Signal | Storage and Expiration | Read Manual for storage condition and expiration. |
| | Antibody Dilution | Dilute antibody 1:100 with Antibody Diluent. |
| | Low Cell Number | Seed more cells. |
| | Cells Detach from Well-Bottoms | Add solutions slowly from the side wall of the wells. Use Poly-L-Lysine to coat the plate period seeding the cells, if necessary. |
| High Background | Washing | Remove Wash Buffer completely. |
| | High Cell Number | Reduce the amount of seeded cells. |
| Variation | Pipetting | Check and/or calibrate pipettes. |
| | Washing | Remove Wash Buffer completely. |
| | Cells Detach from Well-Bottoms | Add solutions slowly from the side wall of the wells. Use Poly-L-Lysine to coat the plate period seeding the cells, if necessary. |

ELISA PLATE TEMPLATE

| | A | B | C | D | E | F | G | H |
|----|---|---|---|---|---|---|---|---|
| 1 | | | | | | | | |
| 2 | | | | | | | | |
| 3 | | | | | | | | |
| 4 | | | | | | | | |
| 5 | | | | | | | | |
| 6 | | | | | | | | |
| 7 | | | | | | | | |
| 8 | | | | | | | | |
| 9 | | | | | | | | |
| 10 | | | | | | | | |
| 11 | | | | | | | | |
| 12 | | | | | | | | |

TECHNICAL SUPPORT

For troubleshooting, information or assistance, please go online to www.assaybiotech.com or contact us at:

Assay Biotechnology Company, Inc.
47787 Fremont Blvd.
Fremont, CA 94538
United States of America

Email: tech@assaybiotech.com

Phone: (408) 747-0185
Toll-Free Phone: (877) 883-7988

Fax: (408) 747-0145
Toll-Free Fax: (877) 610-9758



**Over 2,000 Assay Kits including Sandwich, Cell-Based and
Transcription Factor ELISA Kits**

Visit us at www.assaybiotech.com